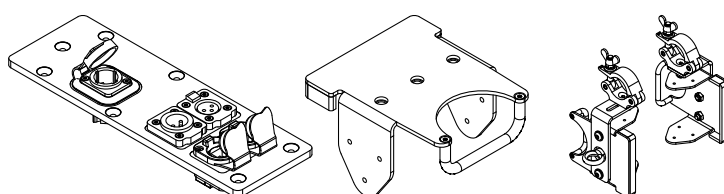




KLING &
FREITAG

SOUND SYSTEMS

EN | VERSION 1.3 | 07/26/2021



USER'S MANUAL

K&F VIDA M Accessories for Mobile Use

Table of Content

Chapter / Content	Page
1 Introduction	4
1.1 Icons Used	4
1.2 About this user's manual	4
2 Product Description	5
2.1 Intended Use	5
2.1.1 VIDA M Mounting Adapter	5
2.1.2 VIDA M Truss Adapter Set	5
2.1.3 VIDA M Connector Panel	5
2.2 Items included	6
2.2.1 VIDA M Mounting Adapter	6
2.2.2 VIDA M Truss Adapter Set	7
2.2.3 VIDA M Connector Panel	8
2.3 Dimensions and Weight	9
2.3.1 VIDA M Mounting Adapter	9
2.3.2 VIDA M Truss Adapter Set	10
2.3.3 VIDA M Connector Panel	11
3 General Safety Instructions	12
4 Installing the VIDA M Mounting Adapter	13
4.1 VIDA M Mounting-Adapter Use Cases	14
4.2 Suspending a Speaker with One Mounting Adapter Installed	15
4.2.1 Vertical Two-Strand Suspension	16
4.2.2 Vertical One-Strand Suspension with Safety	16
4.2.3 Vertical Suspension Using Spigot Adapter with Safety	17
4.3 Using the M10 Stand Sleeve for Speaker-Stand Placement	18
5 Mounting the Truss Adapter Set	19
5.1 Installing a VIDA M Using a Truss Adapter Set	21
6 Mounting the VIDA M Connector Panel	23
7 Care and Maintenance	26
8 Transportation and Storage	26
9 Disposal	26
10 EC Declaration of Conformity	27
10.1 VIDA M Mounting Adapter	27
10.2 VIDA M Connector Panel	28

1 Introduction

1.1 Icons Used

WARNING

This icon indicates a risk of injury or death. Not following these instructions may result in serious health problems including potentially fatal injuries.

CAUTION

This icon indicates a possibly dangerous situation. Not following these instructions may cause minor injuries or damage.

NOTE

This icon marks instructions for proper use of the described products. Not following these instructions may cause malfunctions or damage.

TIP

This icon marks information provided for simplified use of the described products.

1.2 About this user's manual

EN | Translation of the original instructions

© KLING & FREITAG GMBH, all rights reserved.

All specifications regarding the features of the described products and applicable safety guidelines provided in this manual are based on information available at the time of publishing.

We assume no responsibility for technical specifications, dimensions, weights, and properties.

All information in this manual is subject to change without notice.

To ensure safe operation, all persons using the product must have access to this manual and all other relevant material during installation. Don't set up or operate the product before you have carefully read and fully understood this manual. Keep the manual readily available on site at all times.

All KLING & FREITAG manuals are originally authored in German.

KLING & FREITAG spare manuals are separately available for order or can be downloaded

Contact Us: info@cling-freitag.de

KLING & FREITAG GMBH, Wohlenbergstr. 5, D-30179 Hannover

Phone +49 511 96 99 70, fax +49 511 67 37 94 (other countries)

2 Product Description

Using these accessories allows for flexible mobile use of all VIDA M speaker types. You can set them up for different applications on a regular and recurring basis.

2.1 Intended Use

To be operated by qualified personnel only.

Unless otherwise stated, use only KLING & FREITAG original parts for mounting.

2.1.1 VIDA M Mounting Adapter

The VIDA M mounting adapter is provided for use with VIDA M 110 / 110 S and VIDA M 220 / 220 S speakers. It is designed for permanent attachment to the speaker and allows for mounting other accessories, thus ensuring flexible mobile use of the speaker.

The VIDA M mounting adapter is not designed for regularly attaching/removing it to/from the speaker. Once installed, be sure to leave the accessory attached to the speaker.

The installation on one side of the speaker allows for recurrent use of the following:

- Eyelets
- Spigot adapter
- Stand adapter (only for the VIDA M 110 / 110 S)

With the above accessories, be sure to use the VIDA M mounting adapter indoors only.

Outdoor use is permitted only after taking appropriate steps (for example additional horizontal bracing at the speaker bottom and providing a structural certification specifically for the application at hand).

When installing mounting adapters on both sides of the speaker, this provides a second handle for safer handling. It also allows the use of a VIDA M Truss Adapter Set.

Any other use as well as any use not described in this User's Guide is not an intended use.

2.1.2 VIDA M Truss Adapter Set

For using the Truss Adapter Set, you need two VIDA M mounting adapters (sold separately).

Using the VIDA M Truss Adapter Set, you can attach a VIDA M 110 / 110 S or VIDA M 220 / 220 S speaker either vertically or horizontally to a truss or tube with a diameter of approx. 50 mm.

A speaker system installed using this set can be exposed to certain wind loads and therefore be installed outdoors.

Prerequisite is a peak velocity pressure of $q = 0.97 \text{ kN/m}^2$ acting on the speaker. According to the German DIN EN 1991-1-4 standard, this corresponds to wind zone 2 (inland) and a maximum operating height of 25 m above the ground.

Any other use as well as any use not described in this User's Guide is not an intended use.

2.1.3 VIDA M Connector Panel

The VIDA M connector panel provides ports for power supply, audio, and network signals. It can be mounted to any VIDA M speaker. The panel makes establishing and separating connections simple and is particularly useful in mobile use (for example, with rental applications).

Note that the requirements of the IP65 specifications are met only when using Neutrik True Outdoor Protection (TOP) series connectors.

The installation of the connector panel must be performed by a qualified electrician. We therefore recommend permanent installations.

Any other use as well as any use not described in this User's Guide is not an intended use.

2.2 Items included

2.2.1 VIDA M Mounting Adapter

[A] 6 x M6x10 countersunk screw, stainless steel, strength class A2-70, for permanent installation to the speaker

[B] 1 x VIDA M mounting-adapter plate

[C] 2 x Locktix® M10 lock washer for eyebolt

[D] 2 x M10 eyebolt, stainless steel, DIN 580,

When using 20-mm spigot adapter (optional) with M10 × 20 mm external thread:

[E] 1 x Locktix® M14 lock washer

[F] 1 x O-ring 10 × 2.5, for centering M14 lock washer

When using stand a sleeve with M10 external thread:

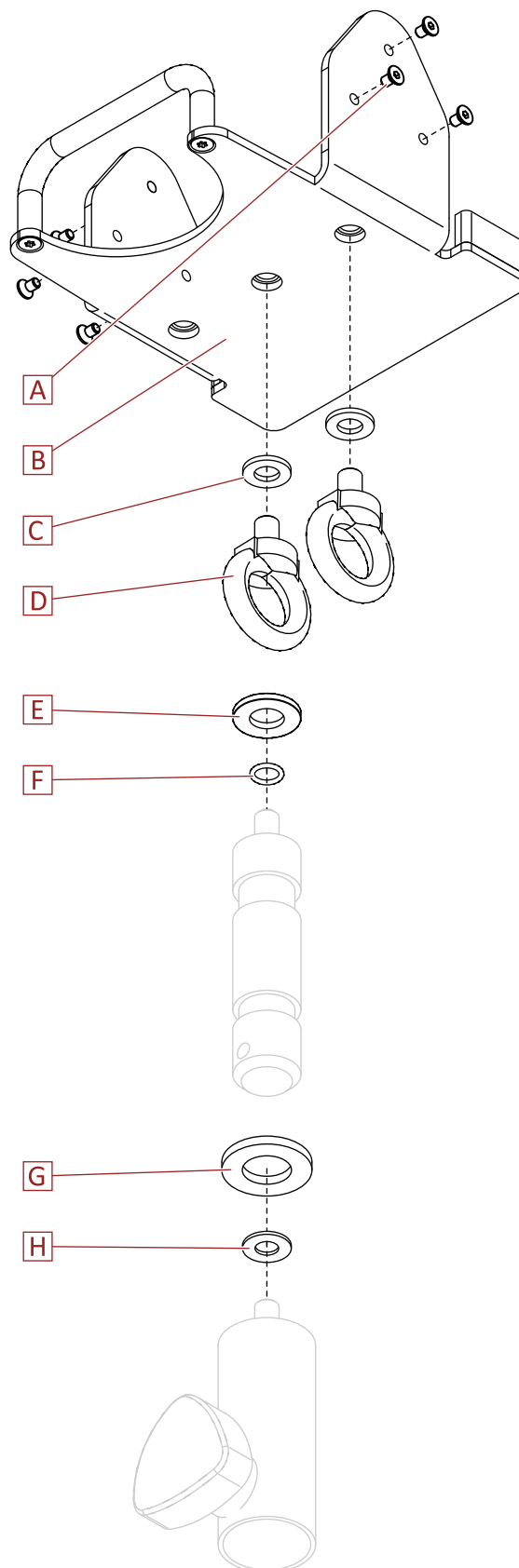
[G] 1 x Sicherungsscheibe ,Locktix®' für M20

[H] 1 x Rubber washer for centering M20 lock washer

- 1 x User's Manual

Note:

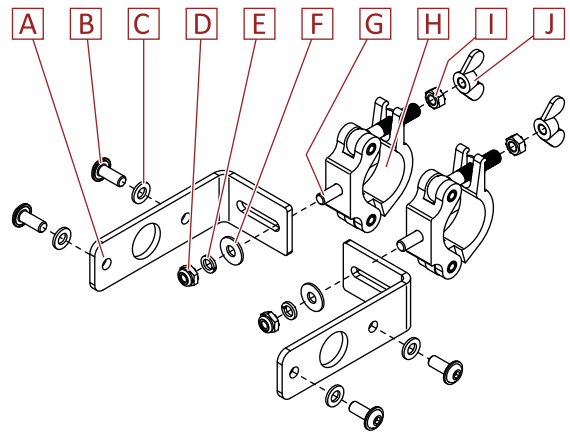
The M10 spigot adapter and the M10 stand sleeve (in gray) are shown for illustration purposes only and are not included.



2.2.2 VIDA M Truss Adapter Set

- 2 x VIDA M mounting adapter (for details on items included with each mounting adapter, refer to chapter »Items included« on page 6)

- [A]** 2 x Truss-Adapter Bracket
- [B]** 4 x M10 x 25 Pan-head screw with flange, grade A2-70
- [C]** 4 x Locktix® M10 lock washer
- [D]** 2 x M10 nut, self-locking, grade 8
- [E]** 2 x M10 spring washer
- [F]** 2 x M10 washer, large
- [G]** 2 x M10 x 35 countersunk screw, grade 8.8
- [H]** 2 x half coupler, 48–51 mm
- [I]** 2 x M12 nut, grade 5
- [J]** 2 x M12 butterfly nut, grade 5

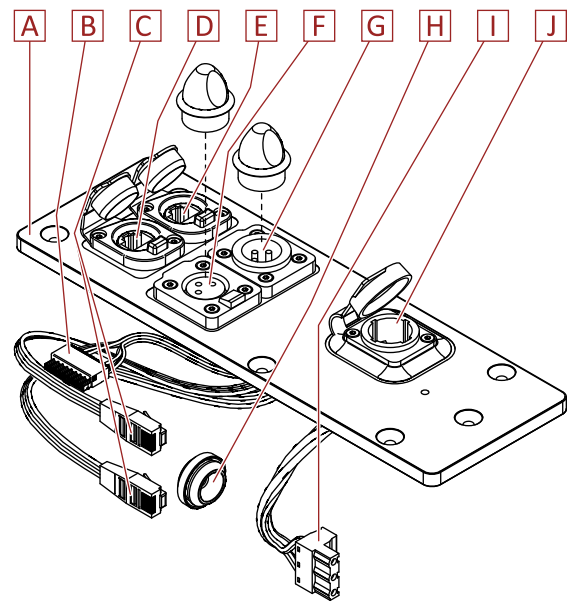


2.2.3 VIDA M Connector Panel

- [A]** Connector panel (all external ports equipped with protective caps)
- [B]** Analog-audio connector (ANALOG IN / AUX OUT)
- [C]** Network cable (Dante)
- [D]** Dante/Remote Secondary, Neutrik etherCon TOP (RJ45)
- [E]** Dante/Remote Primary, Neutrik etherCon TOP (RJ45)
- [F]** ANALOG IN (analog-audio input, Neutrik XLR female TOP)
- [G]** AUX OUT (analog-audio output, Neutrik XLR male TOP)
- [H]** Grommet
- [I]** Phoenix power connector
- [J]** POWER IN (power port, 100–240 VAC; Neutrik PowerCon True1 TOP)

- 1 x mains power cable (EU, Schuko) 3m, Neutrik power-CON TRUE1 TOP

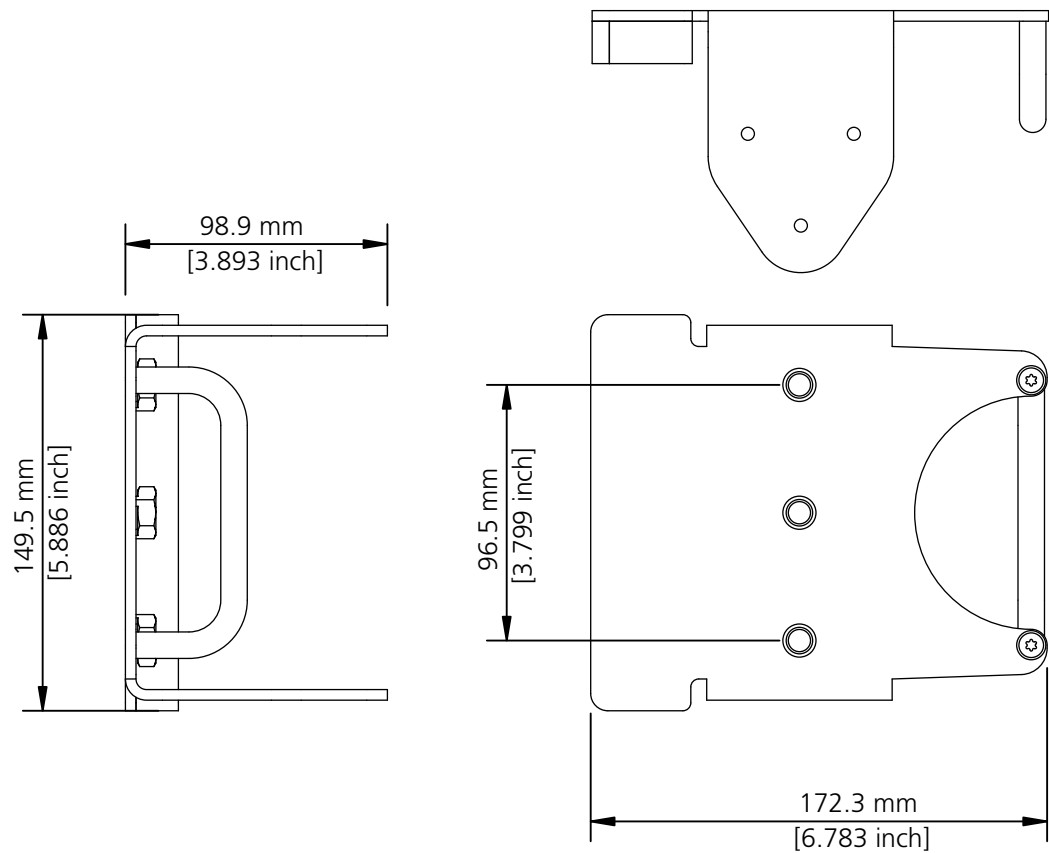
lockable device connector, handles up to 16A, supports insertion / removal on load and voltage



2.3 Dimensions and Weight

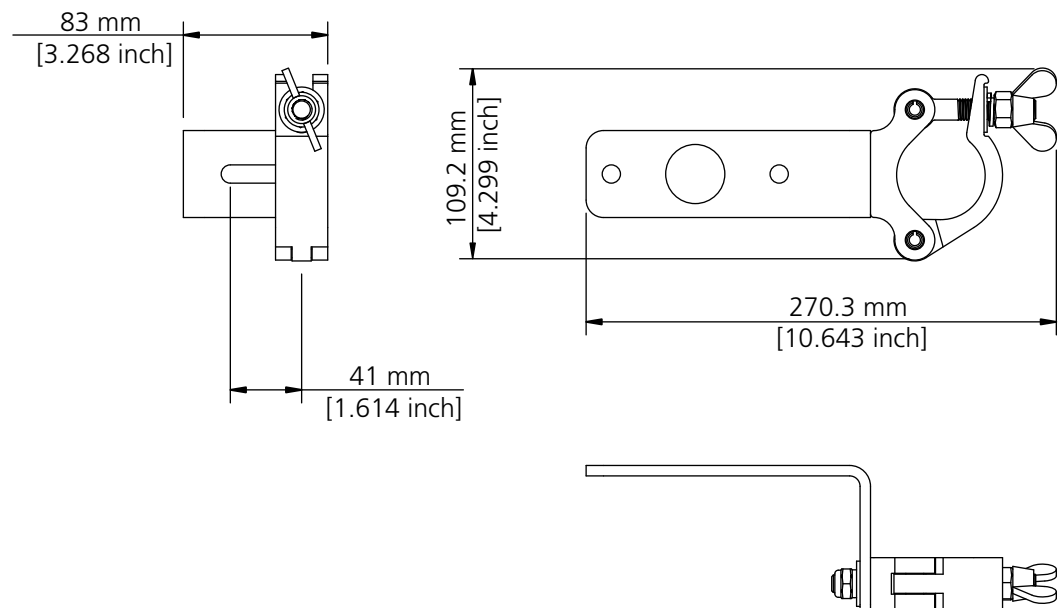
2.3.1 VIDA M Mounting Adapter

Weight: 1.1 kg



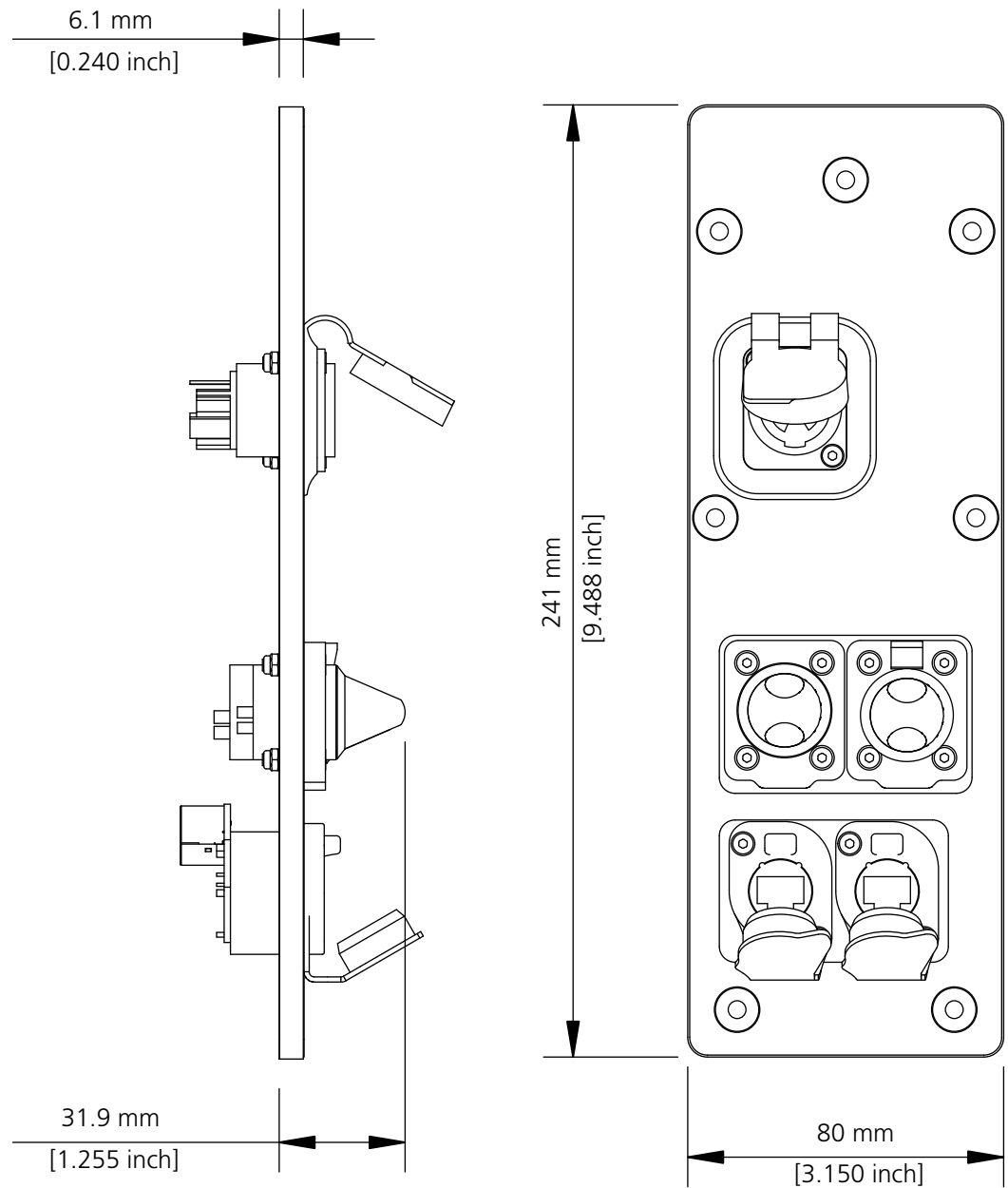
2.3.2 VIDA M Truss Adapter Set

Weight: 0.85 kg



2.3.3 VIDA M Connector Panel

Weight: 0.4 kg



3 General Safety Instructions

The information described here does not relieve the user of the duty to follow the given safety requirements and legal regulations.

The technicians responsible for installing the system on site are responsible for and guarantee safe setup and use.

To prevent injury and damage, be sure to securely mount, suspend, or place the product as specified in the DGUV regulations 17 (BGV C1) or similar locally applicable accident-control standards.

WARNING

Risks imposed by falling or overturning parts

- The VIDA M mounting adapter is not designed for frequent attachment to/removal from the speaker. Therefore, leave the accessory attached to the speaker once mounted!

Throughout its entire lifecycle, a Vida M mounting adapter must be installed/uninstalled (i.e. attached using screws) no more than 5 times!

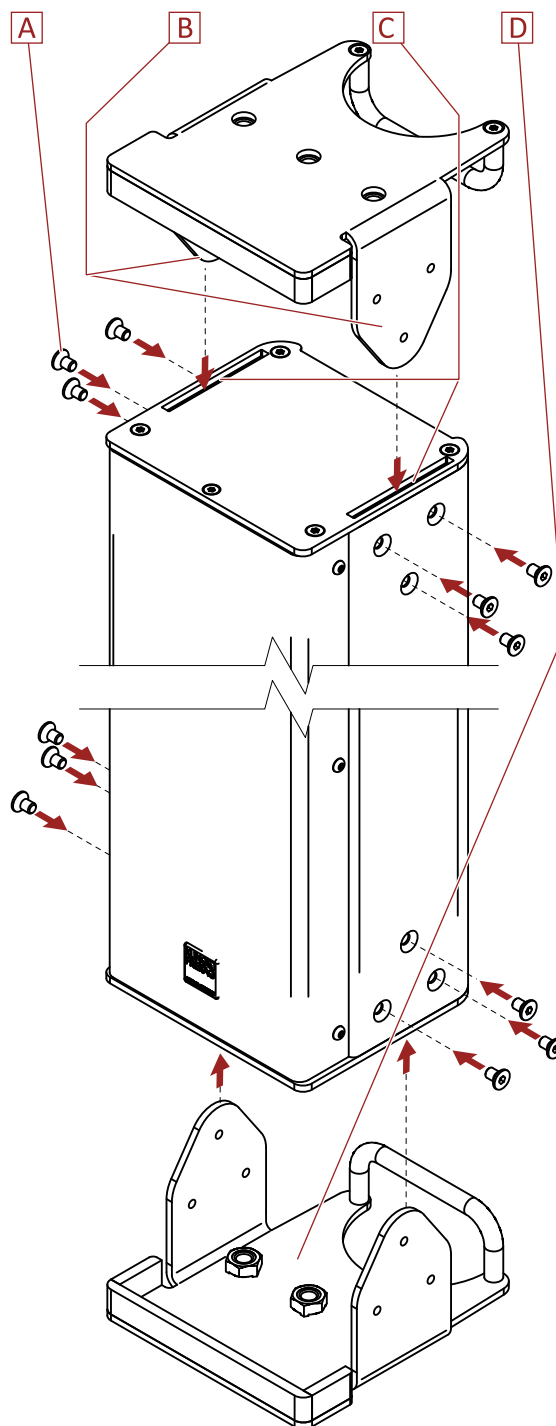
However, using an installed VIDA M mounting adapter allows for attaching and removing appropriate accessories at will.

- Be sure to tighten all bolts and screws to the specified torque.
- Only qualified technicians are permitted to perform the installation steps. Be sure to use personal protective equipment at all times.
- Be sure to use the accessories as specified in this document only.
- Unless otherwise stated, use only KLING & FREITAG original parts for mounting.
- Be sure to perform visual inspections and function checks before each use and at regular intervals. Never use the system if it shows signs of malfunction or wear, cracks, deformation, etc.

4 Installing the VIDA M Mounting Adapter

Required Tools	Required mounting material
IH4 torque wrench with hexagon-socket drive and 3 Nm torque	Loctite 2400 (supplied with the speaker)

1. Apply Loctite 2400 to the threads of screws **[A]**.
2. Slide the tabs of mounting adapter **[B]** into the corresponding inlets of speaker **[C]**.
3. Screw in all M6x10 screws **[A]** using an IH4 hexagon socket wrench. Do not tighten yet!
4. Once all screws are loosely screwed in, tighten them to a **torque of 3 Nm**.
5. For installation on both sides, install the second mounting adapter **[D]** accordingly.



4.1 VIDA M Mounting-Adapter Use Cases

An installed VIDA M mounting adapter provides for various use cases:

1. Single-side use-cases:
 - Vertical speaker suspension
 - Two-strand suspension
 - One-strand suspension with safety
 - Suspension with optional spigot adapter and safety
 - Speaker-stand use (requires optional stand sleeve M10)
2. Dual-side use cases:
 - Allows for conveniently carrying the speaker
 - Horizontal, two-strand speaker suspension

4.2 Suspending a Speaker with One Mounting Adapter Installed

WARNING

Risks imposed by falling parts

- Be sure not to suspend more than one VIDA M 110 / 110 S or VIDA M 220 / 220 S speaker from a mounting adapter.
- Note that speakers suspended using a single installed mounting adapter must be placed vertically and must never be mechanically down-tilted.
- Make sure all fittings used are suitable for the task at hand and meet all relevant safety requirements.
- Ensure that all connections are secured against coming loose and that only authorized, statically tested and correctly sized supports, mounting equipment, wire ropes, and chains are used.
- Note that the suspension points on the hall ceiling (i.e. shackles, attachment points, or chain hoists) must comply with the DGUV regulations 17 (BGV C1) or similar locally applicable accident-control standards. The maximum load must have been certified by an authorized expert.
- Also follow the operating and safety instructions supplied with the product you intend to suspend the VIDA M mounting adapter from (e.g. a truss). Never attach the mounting adapter to a product if there is no information on safe use and maximum load.
- Even with two-fall suspension, each chain and motor must be capable of carrying the entire mass! Make sure that the motor chains hang down vertically and are not twisted, and that the motors are located at the required positions.
- Make sure no persons stand in the danger zone below the speakers during setup and mounting/dismounting.
- Never use signal cables or power cords for suspending, aligning, or securing the systems.

Risk imposed by swinging loads

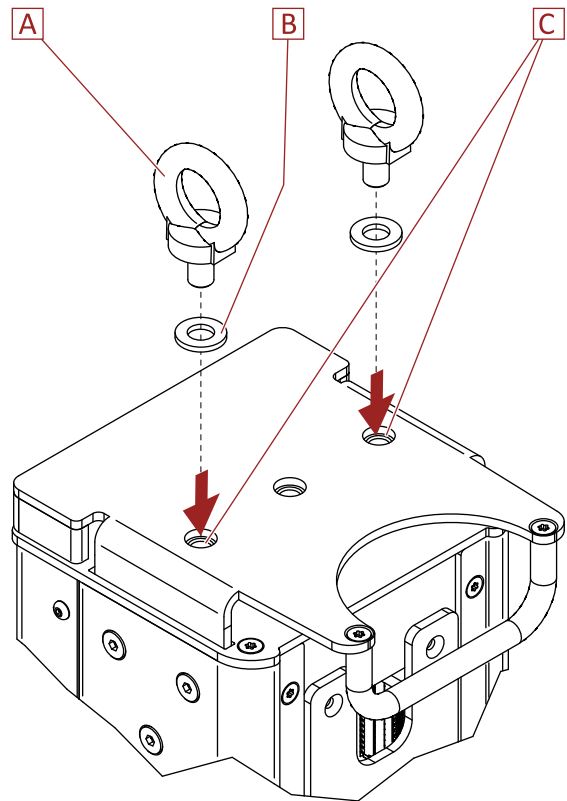
- Remember that speakers being lifted may swing out!
- Ensure there is sufficient clear space for assembling and suspending the speakers on-site.
- Permit only personnel directly involved with assembly or disassembly to access the working area. The person in charge must announce all mounting-adapter lifting and lowering activities beforehand and make sure all people attending are aware. In this case, all persons present must leave the swing and lifting range immediately.

Hazard of falling

- Never use the VIDA M mounting adapter for lifting or securing persons or objects other than the above speakers.
- Implement safeties with not drop distance!

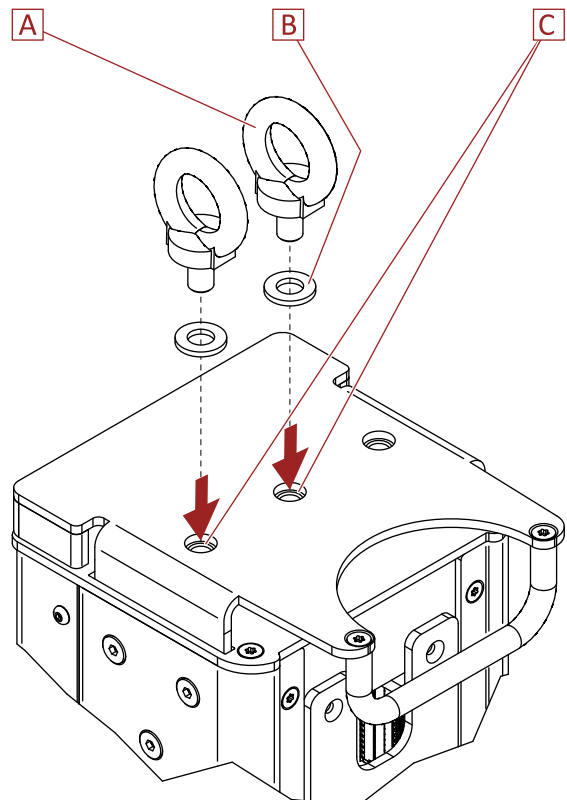
4.2.1 Vertical Two-Strand Suspension

1. Screw eyebolts **[A]** with lock washers **[B]** to the outer M10 thread holes of mounting adapter **[C]**.
2. Hang the speaker in two strands using the eyelets.



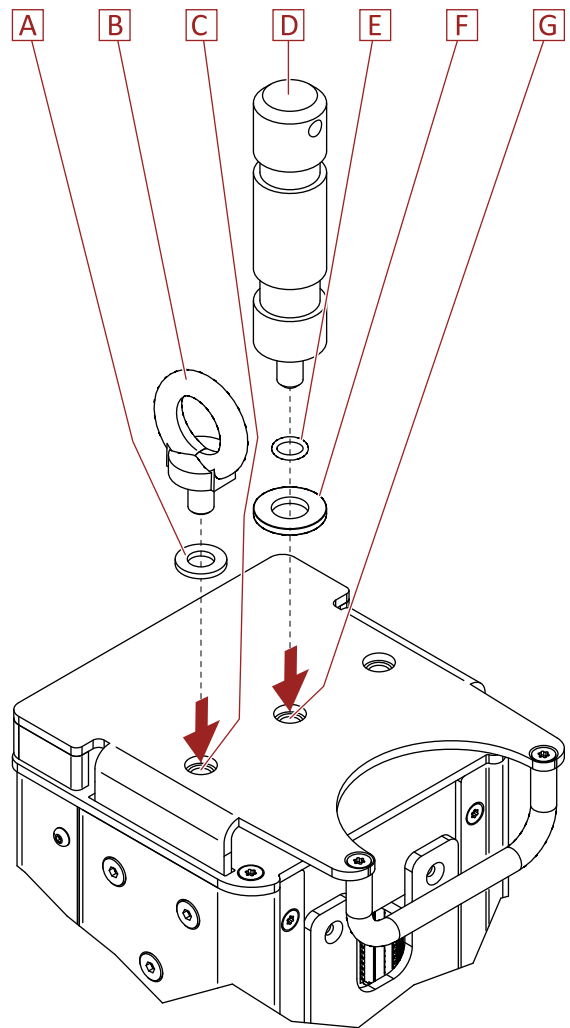
4.2.2 Vertical One-Strand Suspension with Safety

1. Screw eyebolts **[A]** with lock washers **[B]** to the middle and to one outer M10 thread hole of mounting adapter **[C]**.
2. Suspend the speaker on the middle eyebolt and secure it using a safety on the outer eyebolt.



4.2.3 Vertical Suspension Using Spigot Adapter with Safety

1. Screw eyebolt **[B]** with M10 lock washer **[A]** to one of the outer M10 thread holes of mounting adapter **[C]** and tighten it.
2. Screw spigot adapter **[D]** (optional) with O-ring **[E]** and M14 lock washer **[F]** to the middle M10 thread hole of mounting adapter **[C]** and tighten it.
3. Mount the spigot-adapter accessories, then install the speaker.
4. Attach a safety to the eyebolt.



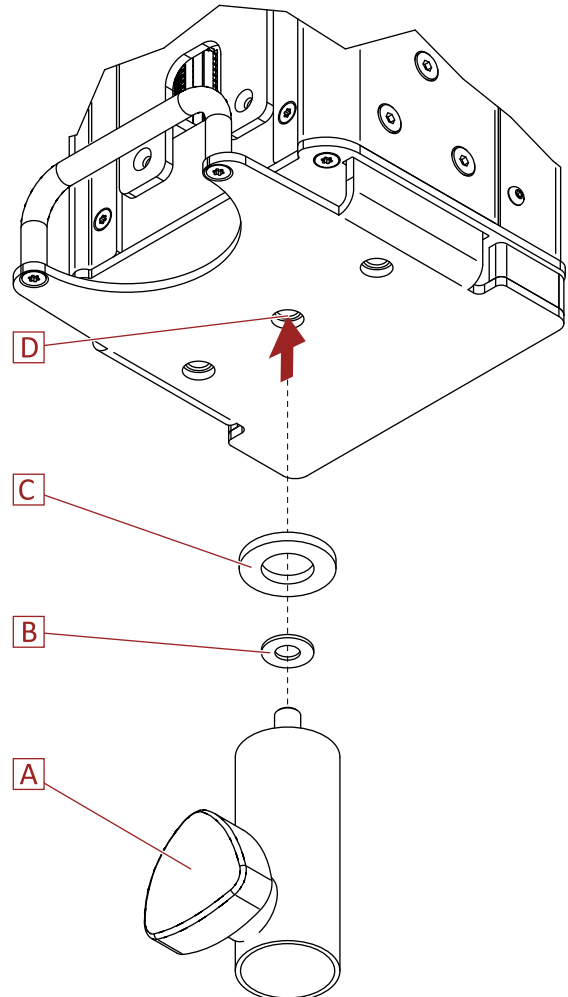
4.3 Using the M10 Stand Sleeve for Speaker-Stand Placement

WARNING

Risks imposed by falling parts

- This use case is suitable for VIDA M 110 / 110 S speakers only.
The VIDA M 220 / 220 S is not approved for use on a stand as that would overload the configuration.

1. Screw stand sleeve [A] with centering disk [B] and M20 lock washer [C] to the middle M10 thread hole of mounting adapter [D] and tighten it.
2. Place the speaker onto a stand of adequate size and stability. (This must be done by two persons.)
3. Fasten the speaker using the hand wheel of stand-sleeve [A].



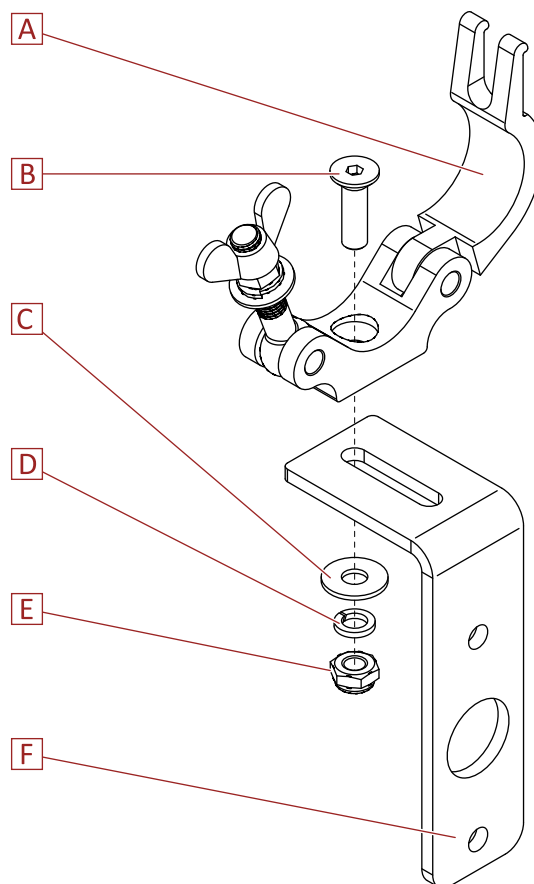
5 Mounting the Truss Adapter Set

Required Tools

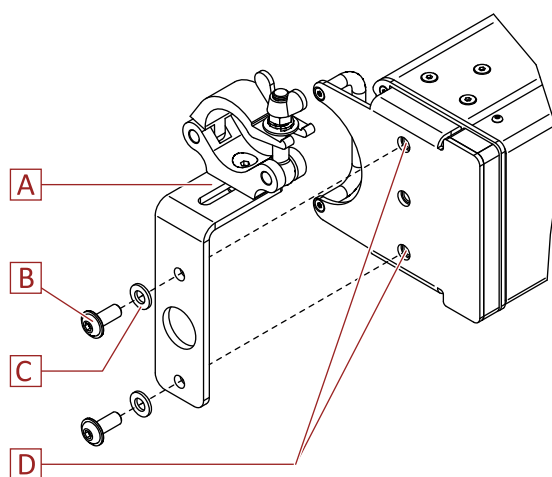
IS6 hexagon socket wrench

Spanner (size 17)

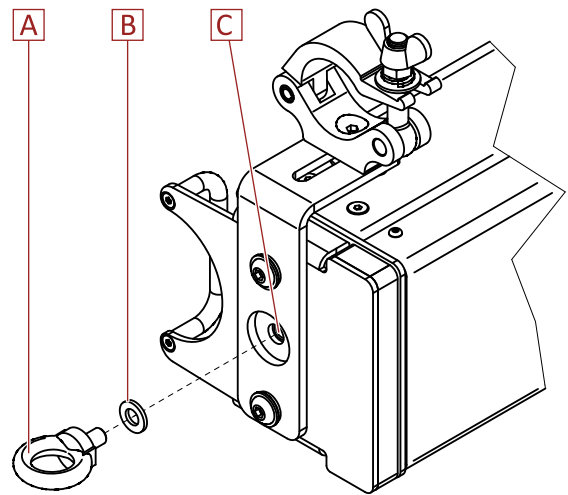
1. Attach two mounting adapters to your speaker (refer to chapter »Installing the VIDA M Mounting Adapter« on page 13).
2. Mount half coupler **[A]** to the truss adapter **[E]** using M10 x 35 countersunk screw **[B]**, washer **[C]** and spring washer **[D]**.
3. Repeat the procedure for the second truss adapter.



4. Screw truss adapter **[A]** using two M10 x 25 pan-head screws **[B]** and two M10 lock washers **[C]** to the outer thread holes of mounting adapter **[D]**.
5. Repeat the procedure for the second truss adapter.



6. To attach a safety, screw one M10 eyebolt **[A]** with an M10 lock washer **[B]** to the middle thread hole of mounting adapter **[D]**.



5.1 Installing a VIDA M Using a Truss Adapter Set

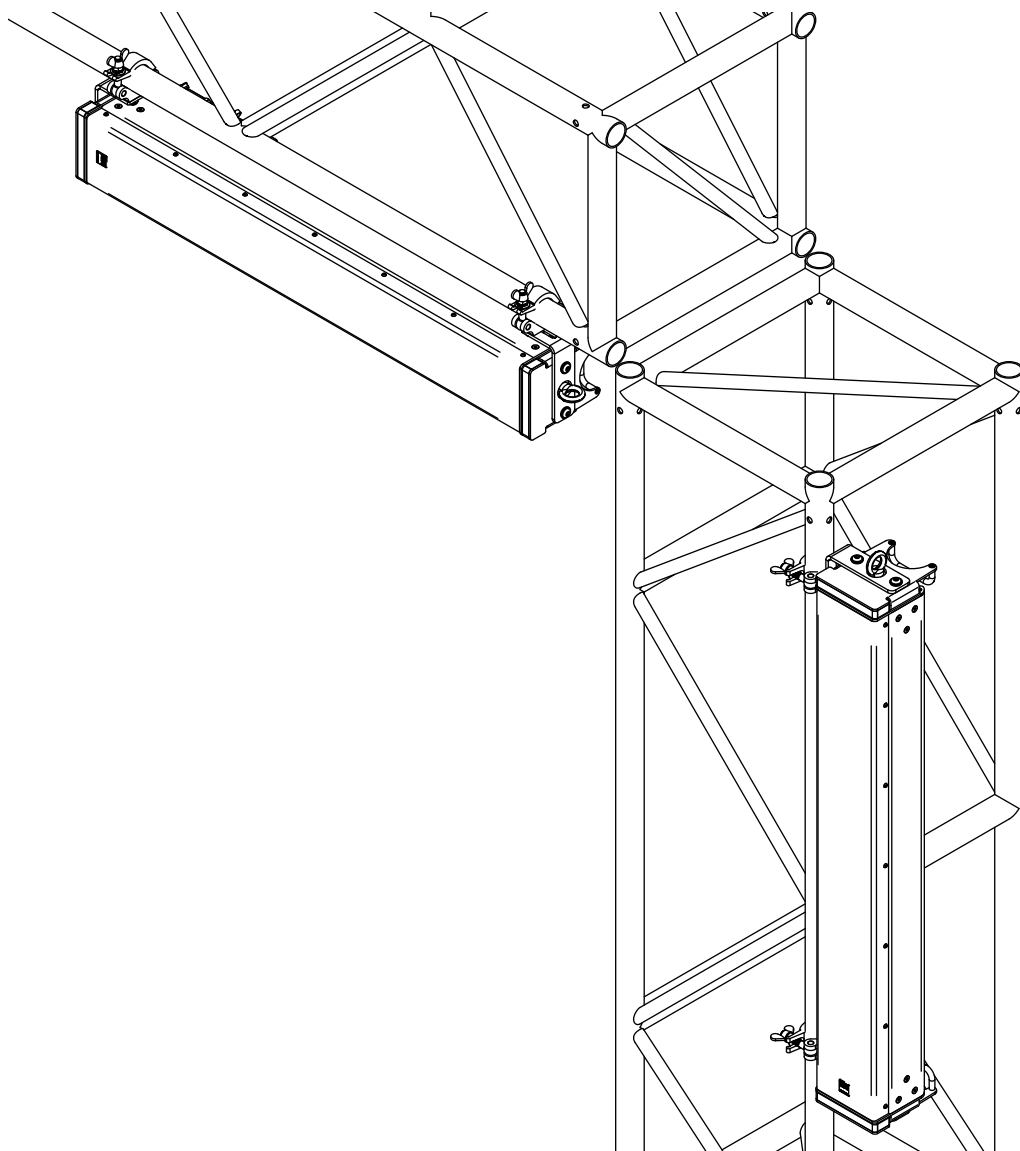
You can attach a VIDA M either horizontally or vertically to a truss or tubes with a diameter of 48–51 mm using the VIDA M Truss Adapter Set.

Required Tools
Spanner (size 16)

WARNING

Risks imposed by falling parts

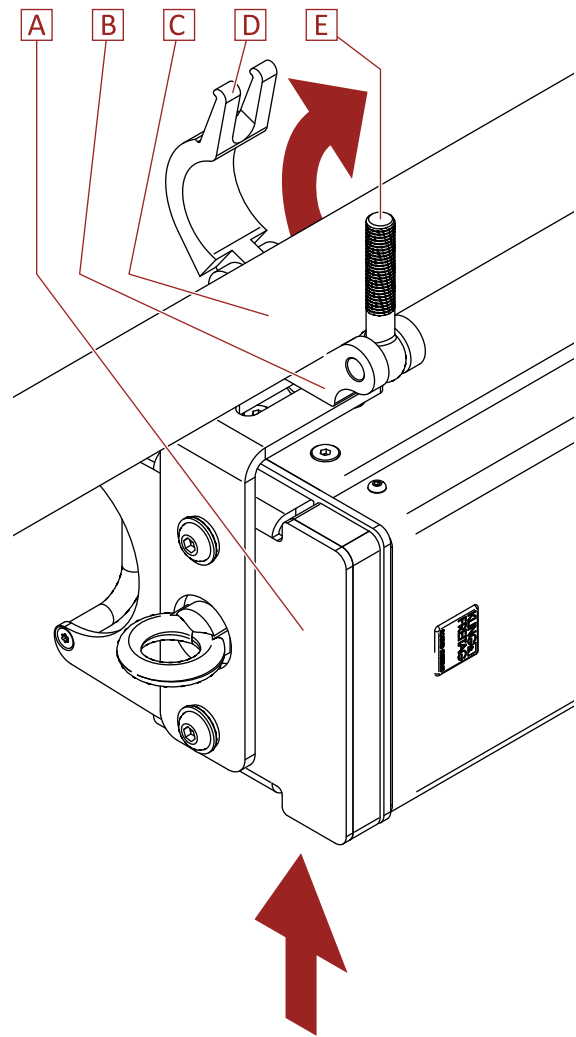
- Be sure to observe the load-bearing capacity of the structures from which you will suspend the speakers (truss, tubes, ceiling, etc.).
- Be sure to install the accessory to a tube or truss with a diameter of 48–51 mm only.



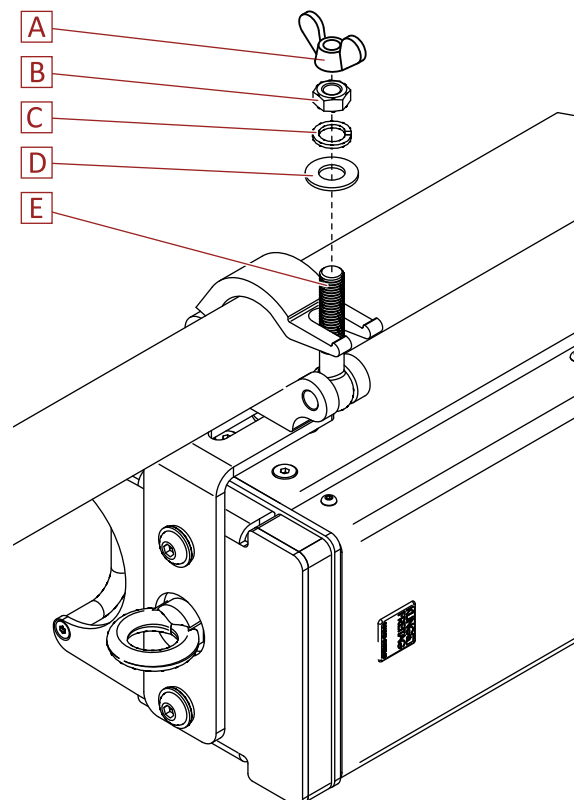
1. Lift speaker **[A]** with half-coupler base **[B]** attached towards tube **[C]**.

This requires at least two persons or a suitable lift.

2. Close the top part **[D]** of the half-coupler.



3. Slide bolt **[E]** into the gap of the upper half-coupler part.
4. Screw the M12 nut **[B]** with spring washer **[C]** and washer **[D]** onto the bolt **[E]** and tighten it.
5. Secure the screw connection using butterfly nut **[A]**.



6 Mounting the VIDA M Connector Panel

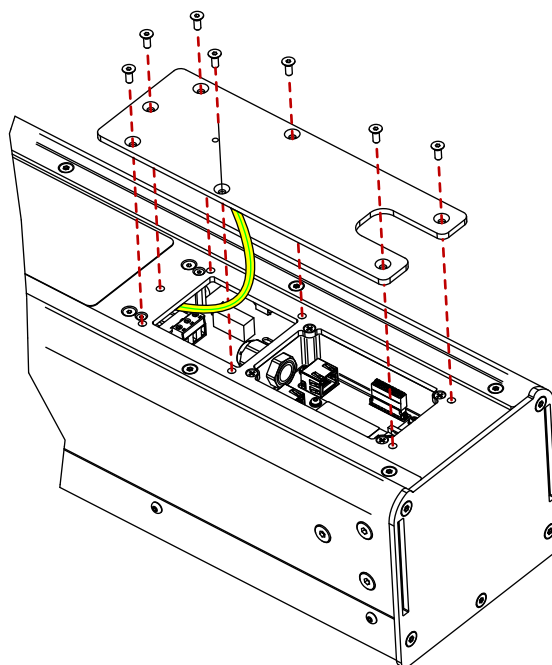
WARNING

Danger of electric shock!

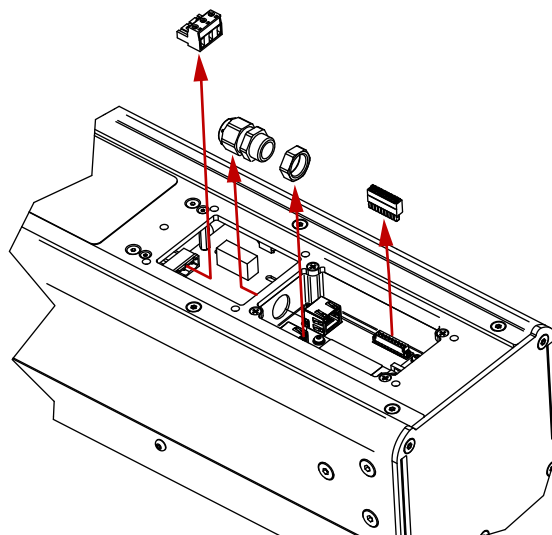
- The installation of the connector panel must be performed by a qualified electrician.
- After installing the connector panel, be sure to check the device as specified in VDE 0100 (IEC 60364-1) or similar standards in your region.
- Note that the requirements of the IP65 specifications are met only when using Neutrik TOP connectors.
- Never perform any maintenance work on the equipment other than what is described in these user's manual.
- Repair work must be carried out by qualified service personnel authorized by KLING & FREITAG.

Required Tools	Required mounting material
Allen key (size 2.5)	Loctite 2400 (supplied with the speaker)
Spanner (size 19)	

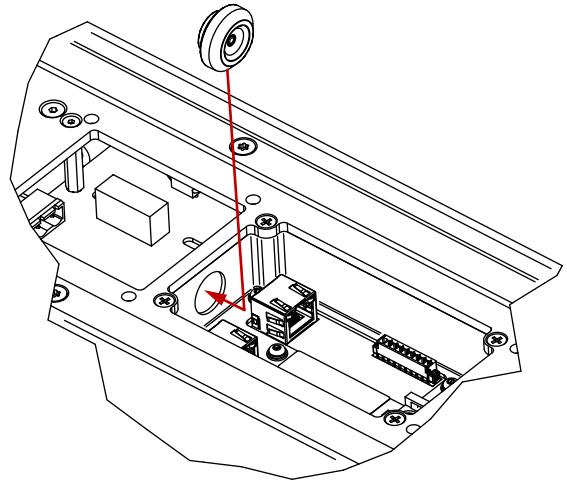
1. Remove the sealing plate of the connector panel using an Allen key (size 2.5).
2. Using the same Allen key, remove the ground wire (green/yellow) from the sealing plate.



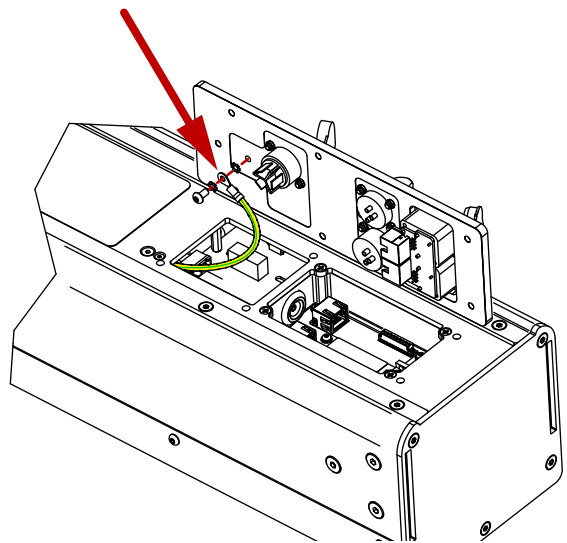
3. Remove the connectors and the bushing shown.
To loosen the bushing, use a spanner (size 19).



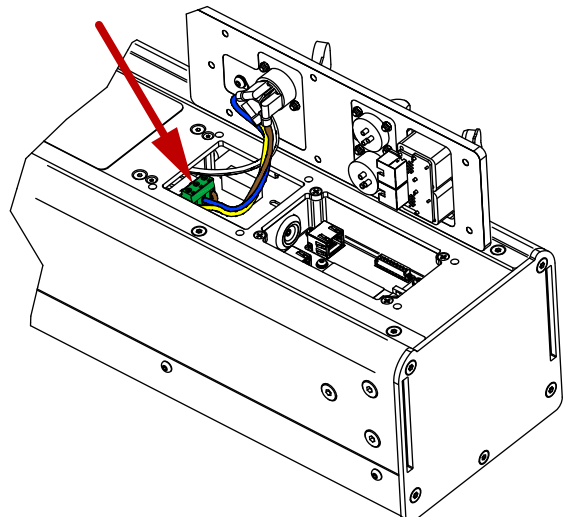
4. Seal the bushing hole using the supplied grommet.
As you push the grommet into the hole, compress it slightly.
Ensure proper seating.



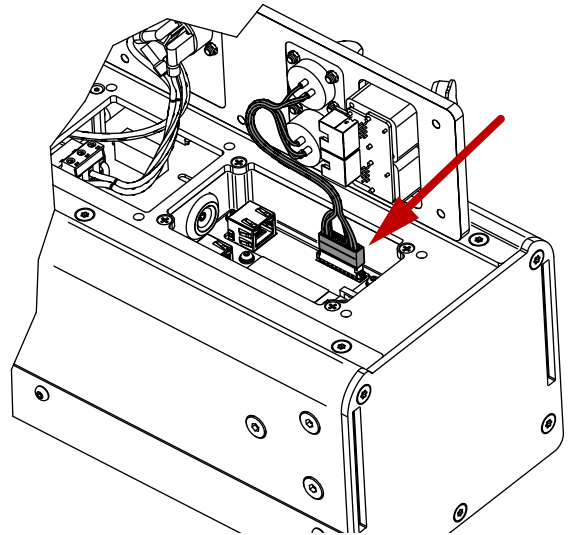
5. Screw the green/yellow ground wire to the connector panel using the Allen key (size 2.5).
Be sure to place the two supplied serrated washers above and below the ring connector, respectively.



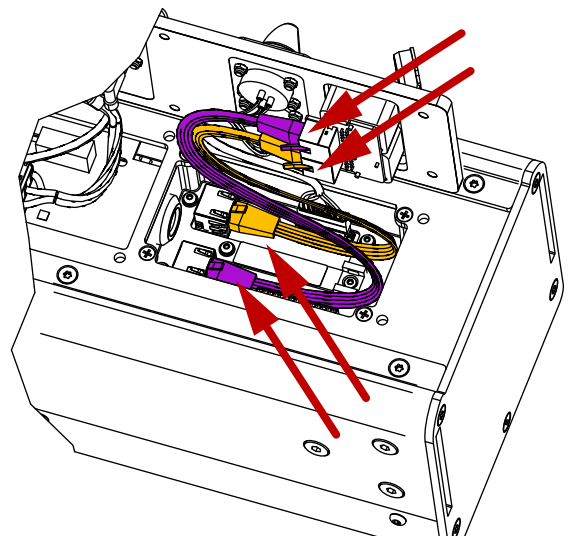
6. Insert the Phoenix power connector into the appropriate port.
7. Ensure correct cable wiring as shown on the circuit board!
8. Ensure proper seating.



9. Insert the audio connector into the appropriate port.



10. Insert the network cable into the appropriate port.
11. Now, reattach the connector panel to the speaker using the screws provided.
12. Perform a speaker check as specified in VDE 0100 (IEC 60364-1) or similar standards in your region.



7 Care and Maintenance

WARNING

Risks imposed by falling or overturning parts

1. Over time, the accessories may exhibit signs of wear, for example, from mechanical strain, transport damage, corrosion, or improper handling.

As a basic principle, you must visually inspect the speaker accessory before and after you use it. For fixed installations, you must inspect it for signs of wear at regular intervals.

When performing those checks, particularly look for deformations, cracks, dents, damage to threads, and corrosion. Also check slings and lifts (e.g. shackles, chains, and steel ropes) carefully for wear and deformation.

If as a result of these checks any uncertainty should arise with regard to safety or if specific faults are found, stop using the accessories and send in the product to KLING & FREITAG for inspection and repairs, if necessary.

Inspection regulations may vary depending on application and country of use. Observe all applicable regulations; If in doubt, contact local authorities.

Many countries require regular inspection of mounting components and accessories. An additional annual inspection is typically required to be performed by a technical expert as per applicable regulations. Moreover, a legally certified or official authority must perform a detailed inspection every four years.

Therefore, be sure to maintain an inspection log. Enter the values determined for each speaker and accessory during the periodic checks into this log. This way, relevant data are always at hand in case of inspection. This inspection log book shall be updated with the inspection steps, test intervals and parts lists.

2. Clean this speaker accessory regularly using a corrosion-prevention penetrating oil (for example, WD-40).

8 Transportation and Storage

Store the product in a dry place. Also, transport under dry conditions only.

During prolonged storage, ensure sufficient ventilation.

Avoid vibrations during transport.

Avoid mechanical stress during transport and storage, so the product is not damaged.

9 Disposal

Dispose of this product according to local ordinance regulations.

Ensure that the product cannot be re-used or used otherwise after disposal.

10 EC Declaration of Conformity

10.1 VIDA M Mounting Adapter

EG-Konformitätserklärung

(Declaration of EG-Conformity)



Hersteller: (Manufacturer)	Kling & Freitag GmbH Junkersstraße 14 30179 Hannover Deutschland
Bevollmächtigter für die Zusammenstellung der technischen Unterlagen: (Authorized representative for the compilation of technical documents)	Kling & Freitag GmbH Abt. Entwicklung Dipl. Ing. Arne Muscheites +49 (0)511 / 96997-50 Deutschland
Produkt: (Product)	Lautsprecherzubehör VIDA M Mounting Adapter

Hiermit erklären wir, dass das genannte Produkt den Schutzanforderungen der folgenden EG-Richtlinien entspricht, einschließlich deren zum Zeitpunkt dieser Erklärung gültigen Änderungen:

(We hereby declare that the designated product is compliant with the safety requirements of the following EU directives – including the changes which applied at the time of the declaration:)

- 2006/42/EG, Maschinenrichtlinie (Machinery Directive)

Zur Beurteilung hinsichtlich der Einhaltung wurden folgende harmonisierte Normen herangezogen:

(Conformance of the products with the requirements is approved by compliance with the following harmonized European standards:)

- IEC 62368-1 : 2014 (Second Edition)

Folgende internationale und nationale Normen und Vorschriften wurden angewandt:

(The following national and international standards and specifications were applied:)

- Eurocode 1/DIN EN 1991-1-1 : 12/2010
- Eurocode 3/DIN EN 1993-1-1 : 12/2010
- DIN EN ISO 12100 : 2011-03
- DIN ISO/TR 14121-2 : 2013-02
- DGUV Vorschrift 17 (BGV C1)

Hannover, 05.03.2021

Jürgen Freitag Geschäftsführung (CEO)

A handwritten signature in blue ink, appearing to be 'J. Freitag', is written over a horizontal line.

10.2 VIDA M Connector Panel

EG-Konformitätserklärung

(Declaration of EG-Conformity)



Hersteller: <i>(Manufacturer)</i>	Kling & Freitag GmbH Junkersstraße 14 30179 Hannover Deutschland
Bevollmächtigter für die Zusammenstellung der technischen Unterlagen: <i>(Authorized representative for the compilation of technical documents)</i>	Kling & Freitag GmbH Abt. Entwicklung Dipl. Ing. Arne Muscheites +49 (0)511 / 96997-50 Deutschland
Produkt: <i>(Product)</i>	Lautsprecherzubehör VIDA M Mounting Adapter

Hiermit erklären wir, dass das genannte Produkt den Schutzanforderungen der folgenden EG-Richtlinien entspricht, einschließlich deren zum Zeitpunkt dieser Erklärung gültigen Änderungen:

(We hereby declare that the designated product is compliant with the safety requirements of the following EU directives – including the changes which applied at the time of the declaration:)

- 2006/42/EG, Maschinenrichtlinie (Machinery Directive)

Zur Beurteilung hinsichtlich der Einhaltung wurden folgende harmonisierte Normen herangezogen:

(Conformance of the products with the requirements is approved by compliance with the following harmonized European standards:)


- IEC 62368-1 : 2014 (Second Edition)

Folgende internationale und nationale Normen und Vorschriften wurden angewandt:

(The following national and international standards and specifications were applied:)

- Eurocode 1/DIN EN 1991-1-1 : 12/2010
- Eurocode 3/DIN EN 1993-1-1 : 12/2010
- DIN EN ISO 12100 : 2011-03
- DIN ISO/TR 14121-2 : 2013-02
- DGVV Vorschrift 17 (BGV C1)

Hannover, 05.03.2021


Jürgen Freitag, Geschäftsführung (CEO)



KLING & FREITAG GmbH

Wohlenbergstrasse 5 · D-30179 Hannover
Phone +49 (0)511 969970
www.kling-freitag.de · info@kling-freitag.de